

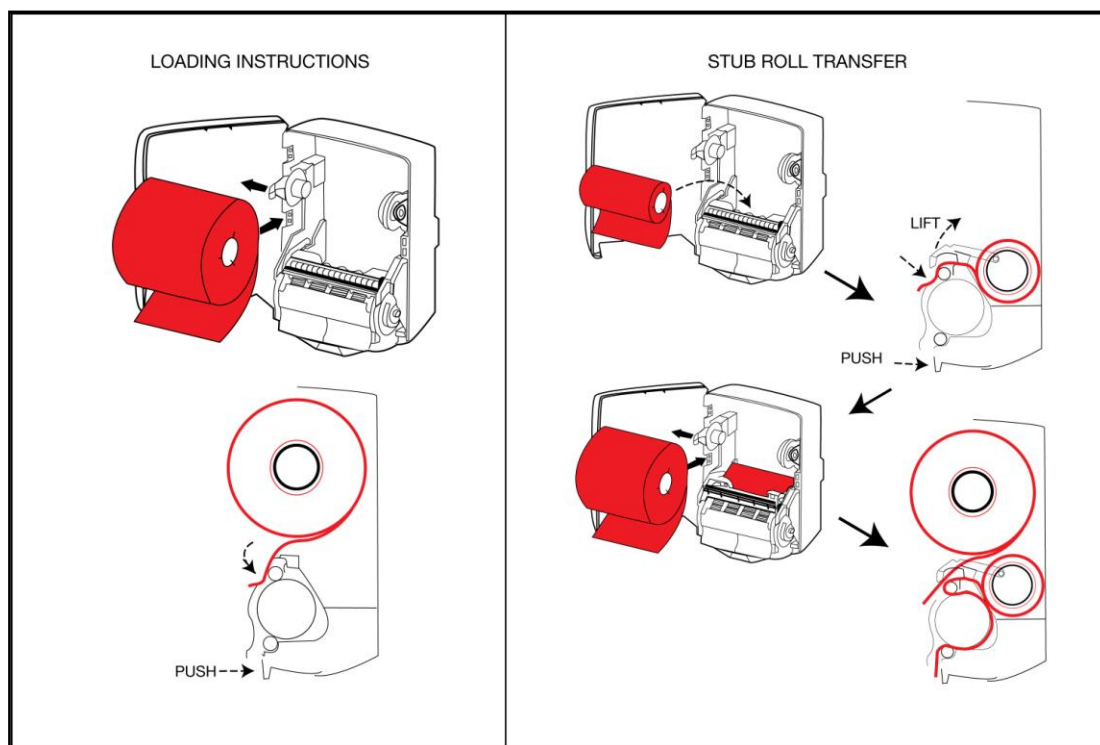
## Dispenser Loading Instructions OptiServ™ Hands Free



|       |   |             |
|-------|---|-------------|
| 86500 | - | Translucent |
| 86530 | - | Red         |
| 86540 | - | Green       |
| 86550 | - | Blue        |
| 86560 | - | White       |

### Dispenser Loading – Hands-Free Mechanical

- Install the roll of paper so that it unwinds from the back
- Tuck the paper under the white bar at the front of the cradle and fold back the start of the new roll about 1” – 2” and crease along the full width of the towel.
- Then press the ‘PUSH’ lever to advance the paper.



### **Automatic Stub Roll Transfer for Hands-Free Mechanical**

- Remove the stub roll from the roll support arms and place in the back of the dispenser, ensuring that the paper runs under the two side pieces of the cradle.
- Place a new roll on the roll support arms with the paper unwinding from the back. Place the end of the paper under the white bar at the front of the cradle, ensuring that the paper runs over the two side pieces of the cradle. Fold back the start of the new roll about 1"-2" and crease along the full width of the towel.
- When the stub roll finishes, the user can advance the new roll by pressing the 'PUSH' lever that is now exposed.